



T&S BRASS AND BRONZE WORKS, INC.
 2 Saddleback Cove / P.O. Box 1088
 Travelers Rest, SC 29690

Model No.
EU-2DP00

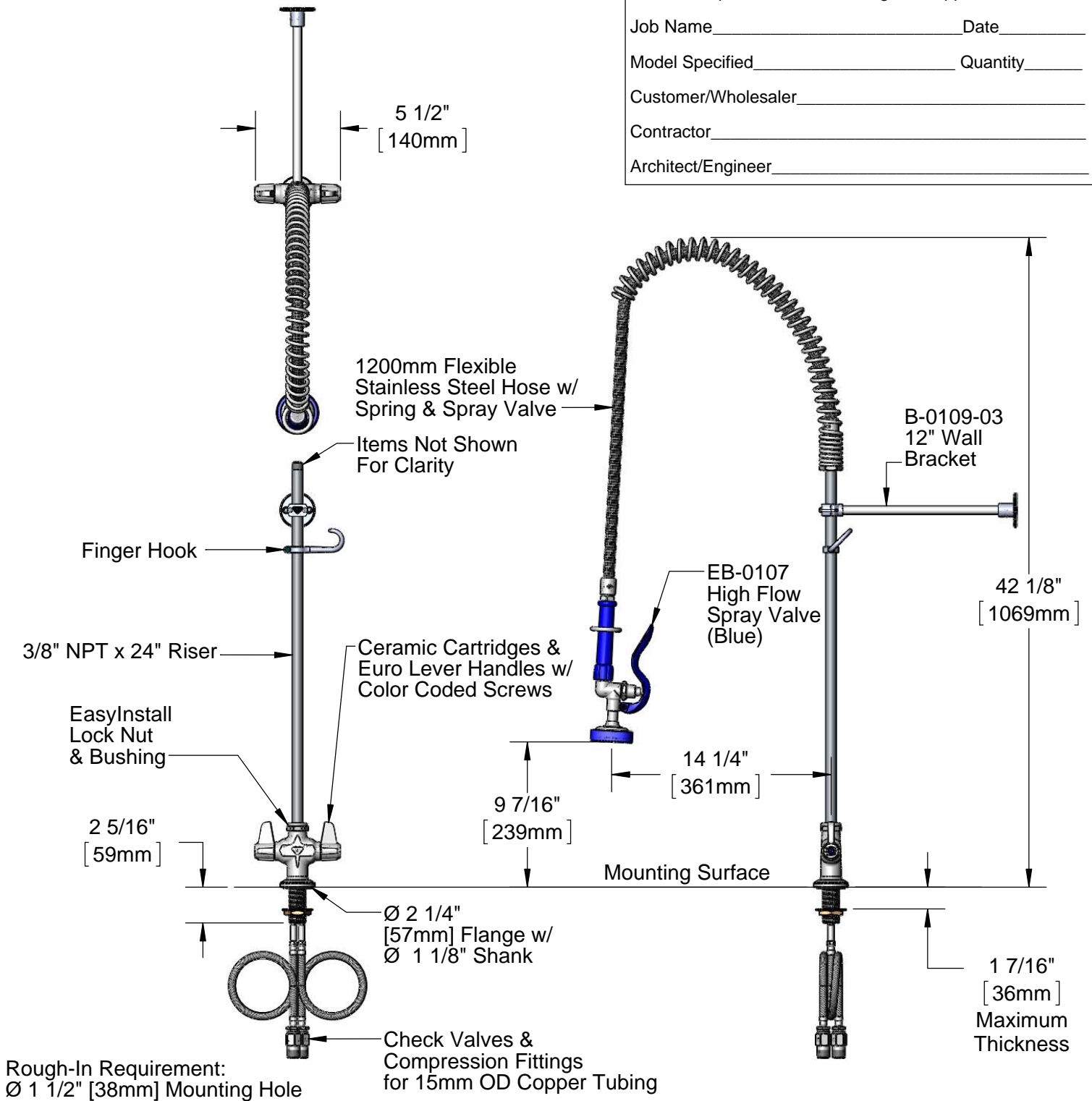
Item No.

Travelers Rest, SC: 800-476-4103 • Simi Valley, CA: 800-423-0150 • Fax: 864-834-3518 • www.tsbrass.com

EPAct 2005 Non-Compliant

This Space for Architect/Engineer Approval

Job Name _____ Date _____
 Model Specified _____ Quantity _____
 Customer/Wholesaler _____
 Contractor _____
 Architect/Engineer _____



Product Specifications:
 Pre-Rinse Unit: Single Hole Deck Mount Mixing Faucet, Ceramic Cartridges, Euro Lever Handles, High Flow Spray Valve (Blue), 1200mm Flexible Stainless Steel Hose, 12" Wall Bracket, 1/2" NPSM Male Threads & 18" Flexible Hoses w/ Check Valves

Drawn DHL	Checked DMH	Approved JHB
Scale: 1:9		Date: 07/03/13



T&S BRASS AND BRONZE WORKS, INC.

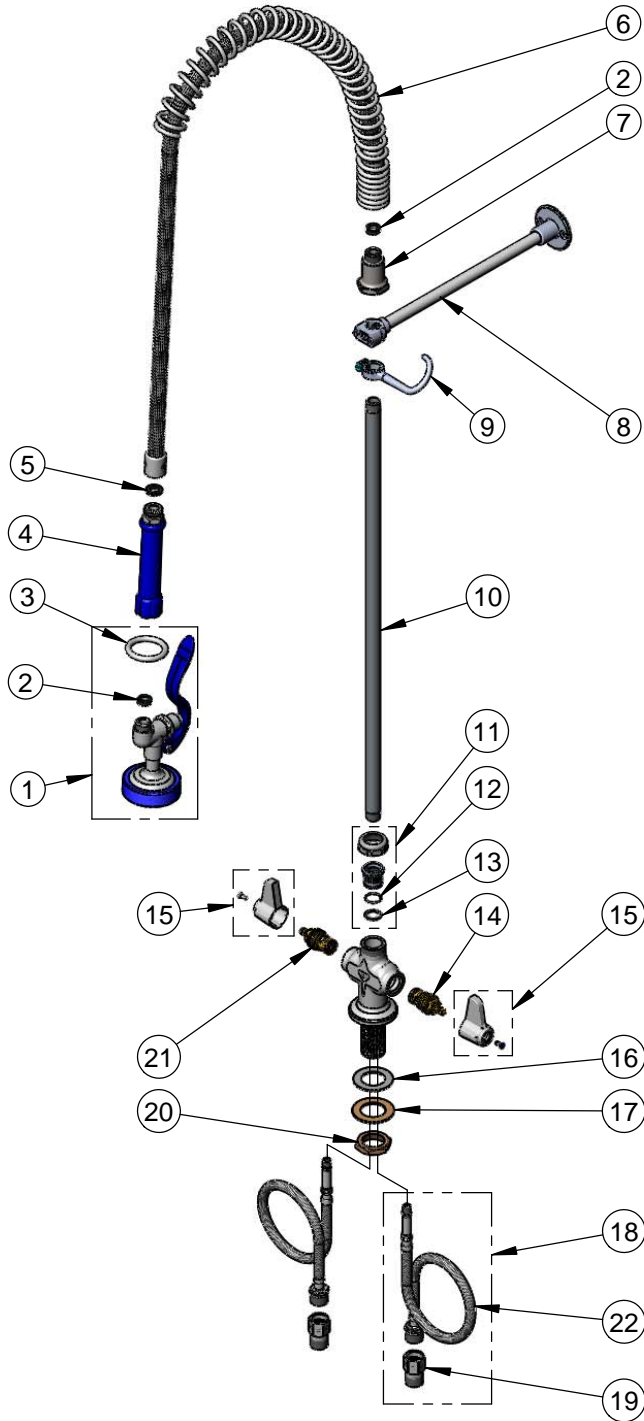
2 Saddleback Cove / P.O. Box 1088
Travelers Rest, SC 29690

Model No.

EU-2DP00

Item No.

Travelers Rest, SC: 800-476-4103 • Simi Valley, CA: 800-423-0150 • Fax: 864-834-3518 • www.tsbrass.com



ITEM NO.	SALES NO.	DESCRIPTION
1	EB-0107	High Flow Spray Valve (Blue)
2	010476-45	#27 Washer
3	000907-45	Spray Valve Hold Down Ring
4	011482-40	Grip Handle (Blue)
5	001014-45	Washer, B-0100 Hose Barrel
6	000888-45	EasyInstall Overhead Spring
7	000821-40	Spring Body
8	B-0109-03	12" Wall Bracket
9	004R	Finger Hook
10	000372-40	3/8" NPT x 24" Riser
11	EU-EZ-K	Euro EasyInstall Kit
12	001062-45	O-Ring
13	014200-45	Star Washer, Anti-Rotation
14	013788-45	equip Ceramic Cartridge, LTC
15	E-HDL-L	Euro Lever Handle w/ Color Coded Screws
16	014612-45	Deck Seal
17	002290-45	Lock Washer
18	016068-25	Euro 15mm Flexible Supply Hose w/ Check Valve
19	016047-25	15mm Check Valve w/ Housing
20	000965-45	Lock Nut
21	013787-45	equip Ceramic Cartridge, RTC
22	012436-45	Euro 15mm Flexible Supply Hose

Product Specifications:

Pre-Rinse Unit: Single Hole Deck Mount Mixing Faucet, Ceramic Cartridges, Euro Lever Handles, High Flow Spray Valve (Blue), 1200mm Flexible Stainless Steel Hose, 12" Wall Bracket, 1/2" NPSM Male Threads & 18" Flexible Hoses w/ Check Valves

Drawn

DHL

Checked

DMH

Approved

JHB

Scale:

NTS

Date:

07/03/13