



**T&S BRASS AND BRONZE WORKS, INC.**  
 2 Saddleback Cove / P.O. Box 1088  
 Travelers Rest, SC 29690

Model No.  
**EU-1DP00**

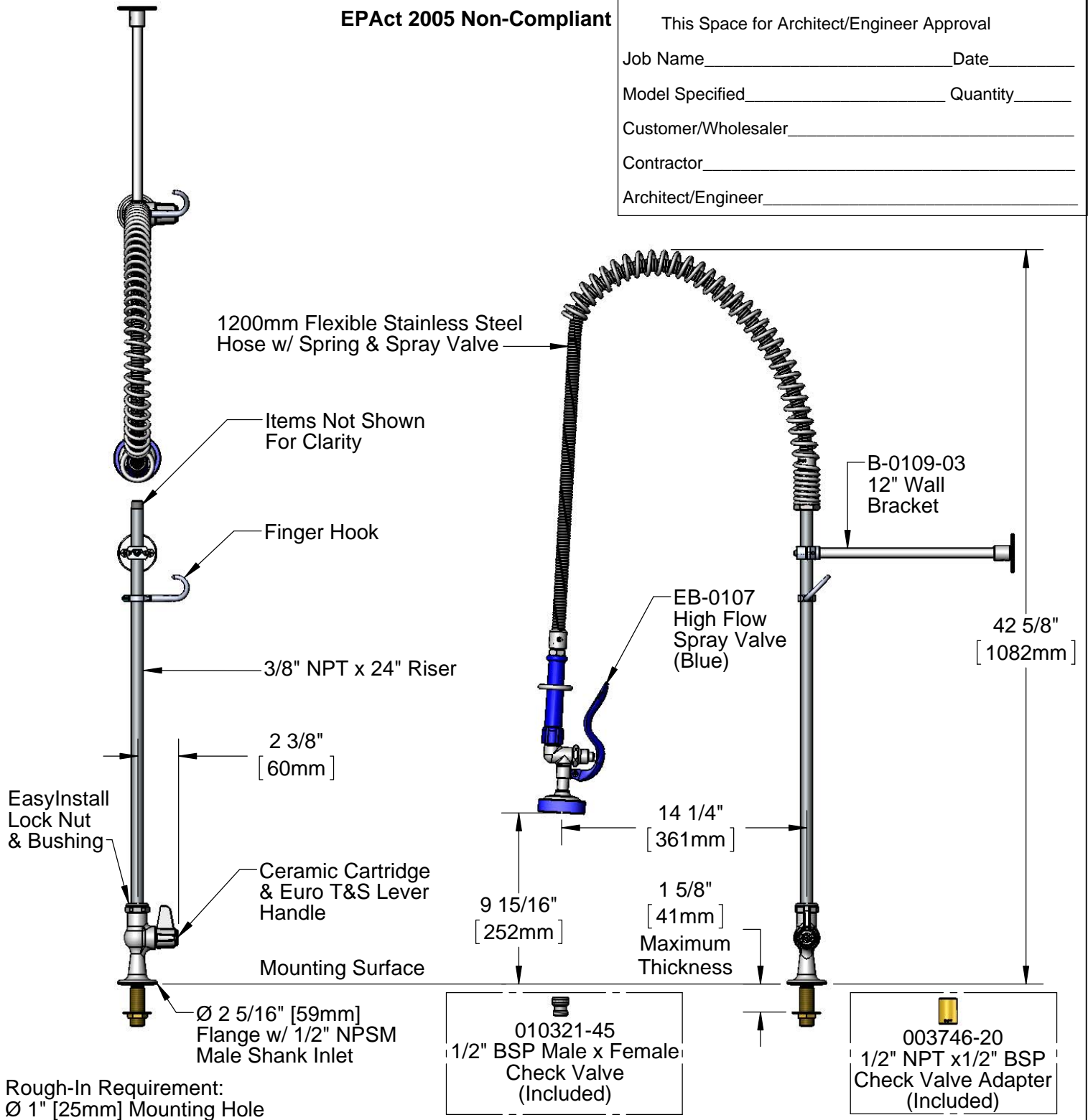
Item No.

Travelers Rest, SC: 800-476-4103 • Simi Valley, CA: 800-423-0150 • Fax: 864-834-3518 • www.tsbrass.com

**EPAct 2005 Non-Compliant**

This Space for Architect/Engineer Approval

Job Name \_\_\_\_\_ Date \_\_\_\_\_  
 Model Specified \_\_\_\_\_ Quantity \_\_\_\_\_  
 Customer/Wholesaler \_\_\_\_\_  
 Contractor \_\_\_\_\_  
 Architect/Engineer \_\_\_\_\_



Rough-In Requirement:  
 Ø 1" [25mm] Mounting Hole

**Product Specifications:**

Pre-Rinse Unit: Single Temperature, Single Hole Deck Mount Faucet, Ceramic Cartridge, Euro Lever Handle, 1200mm Flexible Stainless Steel Hose, High Flow Spray Valve (Blue), 12" Wall Bracket & 1/2" NPSM Shank Inlet w/ BSP Adapter & Check Valve

Drawn <b>DHL</b>	Checked <b>JRM</b>	Approved <b>JHB</b>
Scale: <b>1:8</b>		Date: <b>07/01/13</b>

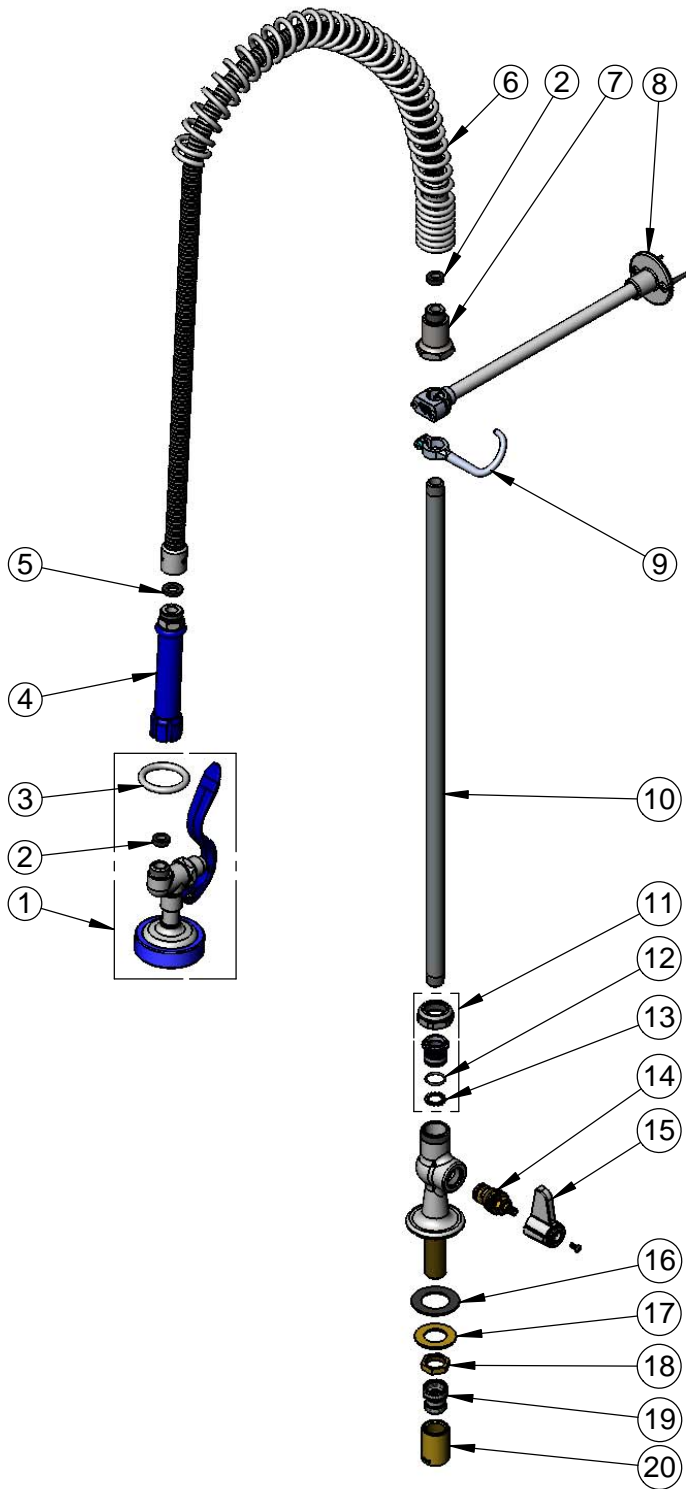


**T&S BRASS AND BRONZE WORKS, INC.**  
 2 Saddleback Cove / P.O. Box 1088  
 Travelers Rest, SC 29690

Model No.  
**EU-1DP00**

Item No.

Travelers Rest, SC: 800-476-4103 • Simi Valley, CA: 800-423-0150 • Fax: 864-834-3518 • www.tsbrass.com



ITEM NO.	SALES NO.	DESCRIPTION
1	EB-0107	High Flow Spray Valve (Blue)
2	010476-45	#27 Washer
3	000907-45	Spray Valve Hold Down Ring
4	011482-40	Grip Handle (Blue)
5	001014-45	Washer, B-0100 Hose Barrel
6	000888-45	EasyInstall Overhead Spring
7	000821-40	Spring Body
8	B-0109-03	12" Wall Bracket
9	004R	Finger Hook
10	000372-40	3/8" NPT x 24" Riser
11	EU-EZ-K	Euro EasyInstall Kit
12	001062-45	O-Ring
13	014200-45	Star Washer, Anti-Rotation
14	013787-45	Ceramic Cartridge, RTC (Red)
15	E-HDL-L	Euro Lever Handle w/ (2) Color Coded Screws
16	014612-45	Deck Seal
17	000999-45	Brass Lock Washer
18	002954-45	Shank Lock Nut
19	010321-45	Check Valve
20	003746-20	Adapter, 1/2" NPSM x 1/2" BSP

**Product Specifications:**

Pre-Rinse Unit: Single Temperature, Single Hole Deck Mount Faucet, Ceramic Cartridge, Euro Lever Handle, 1200mm Flexible Stainless Steel Hose, High Flow Spray Valve (Blue), 12" Wall Bracket & 1/2" NPSM Shank Inlet w/ BSP Adapter & Check Valve

Drawn

**DHL**

Checked

**JRM**

Approved

**JHB**

Scale:

**NTS**

Date:

**07/01/13**